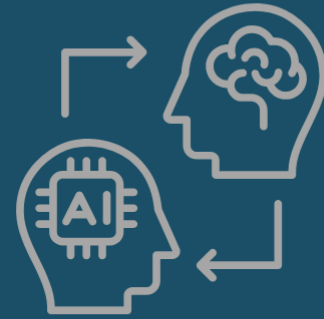


Human Edge



Human Edge: The Human Impact Studio

An applied, interdisciplinary innovation experience for the AI era

Partnership Invitation

October 2026 | DCU Center, Worcester, MA

Q1 2027 | Museum of Science, Boston, MA

A flagship initiative of Strategic Growth & Innovation, LLC (SG+I)



AI Is Advancing Faster Than Human Judgment.

39% of core skills will change by 2030.

63% of employers cite skill gaps as their greatest barrier.

Few models integrate ethics with real-world AI application.

Artificial intelligence is transforming every industry.
Its impact depends on people prepared to use it responsibly.

Human Edge exists to close that gap.

Human Edge provides a structured, governed model for building responsible AI capability at scale.

%'s from WEF Future of Jobs Report 2025



This Is Not a Hackathon. This is Not a Conference.

The Human Impact Studio is a **live, interdisciplinary AI learning environment designed** to develop judgment, not just technical output.

Most innovation sprints prioritize speed.
Human Edge prioritizes responsibility.

Most collaboration is siloed.
Human Edge is interdisciplinary by design.

Most programs are one-time events.
Human Edge is a scalable collaboration model.

Participants work real challenges, use real data, collaborate across disciplines, surface ethical tradeoffs, and present to real decision-makers.

Already Demonstrated. Already Trusted.

Proven Model. Scaling Responsibly.

November 2025 | Hack for Human Impact

100 Students

6 Institutions

Industry, State & Civic Leadership Participation

Enterprise AI Tools in Use

94% shifted toward human-centered innovation

77% increased AI confidence

January 2026 AI Ethics Roundtable — Massachusetts State House

Convened by Senator Michael O. Moore in partnership with Human Edge. Cross-sector dialogue on ethics, trust, and innovation with leaders from state government, civil liberties, higher education, industry, and science policy.

This is not a prototype.

It is a working model.

Scaling With Intention.

Thought Leadership & Institutional Engagement

- **April 2026 Bentley Global AI Hub Roundtable** *Expanding cross-sector governance dialogue with new institutional and industry partners.*
- **April 2026 University of Scranton — Confronting the Ethics of AI Conference** *Presenting the Hack for Human Impact model as a replicable framework for ethical AI literacy and application.*

Flagship Engagements

- **October 24, 2026 Human Edge: The Human Impact Studio** *200+ Participants | DCU Center, Worcester, MA*
- **Q1 2027 Human Edge: The Human Impact Studio** *Museum of Science, Boston, MA*

Sponsorship commitments support upcoming Human Edge Flagship Studio experiences, beginning with the October 2026 DCU Center Studio.

Ongoing Cross-Sector Governance & Workforce Roundtables

Building infrastructure, not moments.

Shared Investment. Shared Responsibility.

Academic Institutions

Position your institution at the forefront of interdisciplinary AI education.

Your students collaborate across disciplines on real-world challenges.

Your faculty engage with cross-sector leaders.

Your institution is recognized within a growing national model for responsible AI learning.

Institutional participation supports coordination, credentialing, and shared infrastructure.

Corporate & Industry Partners

Connect your organization to the talent, dialogue, and leadership shaping responsible AI.

Direct access to emerging AI-ready talent.

Visible leadership within a governed, ethical framework.

Meaningful engagement through mentorship, judging, and challenge participation — without influencing content or evaluation.

Infrastructure & Technology Partners

Enable applied learning through real tools in real context.

Your platforms are experienced within live interdisciplinary problem-solving — not as demos, but as applied systems.

Human Edge retains program design authority under SG+I stewardship. Engagement does not influence curriculum, challenge design, or evaluation.

How Organizations Engage

Academic Institution Participation

Institutions engage through structured Studio participation.

- Student cohort participation
- Faculty mentors and judges
- Institutional visibility within the Studio
- Shared investment in coordination and documentation

Participation reflects institutional commitment to interdisciplinary AI learning.

Industry & Civic Partnership

External partners support delivery, access, and workforce alignment.

- Leadership visibility
- Talent access across institutions
- Mentorship and judging roles
- Studio impact report inclusion
- Infrastructure: API credits, secure environments, compute resources, accessibility support

Engagement reflects contribution — not sponsorship status.

Tiered partnership structure detailed on next slide.

Leadership Sponsors Define the Future

Sponsorship funds upcoming Human Edge Flagship Studio experiences, beginning with the October 2026 Human Impact Studio, DCU Center.

Presenting Partner — \$25,000+

Strategic Leadership Tier

- Exclusive “Presented By” designation across all Studio communications
- Premier visibility across academic, industry, and civic audiences
- On-stage leadership presence and opening remarks
- Four executive mentor/judge seats with structured engagement across interdisciplinary teams
- Private roundtable with academic and civic leaders on AI workforce transformation
- Featured insight in post-Studio impact report summarizing participant outcomes, interdisciplinary engagement, and ecosystem participation
- Invitation to post-event strategic partner briefing

Positioned as a founding architect of responsible AI learning and regional innovation leadership.

Innovation Partner — \$10,000

Engagement Leadership Tier

- Two mentor/judge seats with participant engagement
- Opportunity to present award during the closing session
- Recognized as an Innovation Partner advancing responsible, interdisciplinary AI workforce development
- Inclusion in the Studio impact report
- Invitation to post-event partner briefing

Positions your organization within a trusted ecosystem advancing applied, human-centered AI capability.

Academic Institution Partner — \$5,000

Academic Leadership Tier

- Structured student cohort participation across disciplines
- Faculty integration as mentors, judges and facilitators of pre-event workshops
- Cross-institutional collaboration with regional industry partners
- Credentialed, documented experiential learning for students
- Institutional recognition as a Human Edge Academic Partner
- Participation in post-event academic reflection and innovation session

Demonstrates institutional commitment to interdisciplinary AI leadership and workforce readiness.

Studio Partner — \$5,000

Engagement Tier

- Participation in mentor orientation and ecosystem dialogue session
- Studio partner recognition across materials
- Logo placement in event communications
- One mentor or observer seat
- Inclusion in Studio impact report
- Invitation to post-event partner briefing

Engage directly in shaping next-generation AI talent and responsible innovation dialogue.

Four Cohorts. One Studio.

High School Participants

Early exposure to applied, human-centered AI learning.

Undergraduate Participants

Cross-disciplinary collaboration and real-world AI application.

Graduate Participants

Advanced interdisciplinary problem-solving and governance framing.

Professional Participants

Applied AI literacy, cross-functional innovation practice, and workforce transformation dialogue.

Professional registration available.

Corporate group participation supported.

Interdisciplinary learning happens when experience is shared — not siloed.



Designed With Integrity.

Human Edge operates under the stewardship of Strategic Growth & Innovation (SG+I).

Program design authority remains centralized.

Ethical standards are embedded throughout.

Sponsorship does not influence content or evaluation.

Replication follows structured governance and quality control.

Trust is built through structure.

The Future of AI Will Not Be Shaped by Technology Alone.

It will be shaped by the people prepared to use it responsibly.

Partners who engage now help define how responsible AI learning scales — in Massachusetts and beyond.

To explore participation or sponsorship:

Shauna Conway

Founder, Strategic Growth & Innovation

sconway@strategicgrowthandinnovation.com

Supported by:

