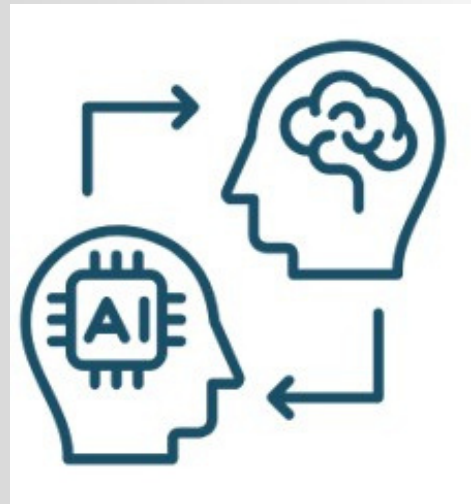


# HUMAN EDGE

Where Liberal Arts Meets  
AI for Real-World Impact



## What It Is

Human Edge is SG+I's signature initiative, uniting liberal arts thinking with technical innovation.

We create spaces where leaders, students, and industry explore AI's opportunities and challenges—grounded in ethics, interdisciplinary problem-solving, and human-centered outcomes.

## Why It Matters

- AI adoption is accelerating, but human context is often missing.
- Liberal arts skills—critical thinking, ethics, creativity—are essential for responsible innovation.
- Interdisciplinary collaboration produces solutions that are more inclusive, sustainable, and impactful.

## Who's Involved

We're proud to collaborate with:  
College of the Holy Cross · Worcester  
Polytechnic Institute · Michigan State  
University · Massachusetts AI Hub · Sundai  
Club · Worcester City Hall · Industry Partners

## How It Works



### Programs & Experiences

Hackathons, workshops, and forums that unite diverse disciplines to solve real-world challenges.



### Partnerships

Collaboration with academia, industry, and civic leaders to bridge learning and application.



### Advisory & Strategy

Guidance for organizations on integrating human-centered AI into strategy and operations.

## The Case for Human Edge

### On AI's role in decisions:

- "AI is enhancing human decision-making, driving better outcomes and operational efficiency across the board — but for complex decisions, context and human insight remain indispensable." —(LSE Business Review, 2025)

### On adoption momentum:

- 99% of C-suite leaders and 94% of employees report having some level of familiarity with generative AI tools. — McKinsey, 2024

## Take the Next Step

Let's shape an AI future that's as human as it is intelligent. Reach out to explore partnerships or advisory support.