

HUMAN EDGE

Mentors

Human Edge: Where Liberal Arts Meets AI for Real-World Impact

Human Edge brings together students, educators, industry leaders, and civic partners to explore how artificial intelligence can be applied responsibly to real-world challenges.

Mentors provide guidance to interdisciplinary student teams as they navigate complex questions involving data, technology, ethics, and societal impact.

The Role

Mentors support student teams during the Human Impact Studio by sharing practical insights, asking thoughtful questions, and helping students connect ideas to real-world context.

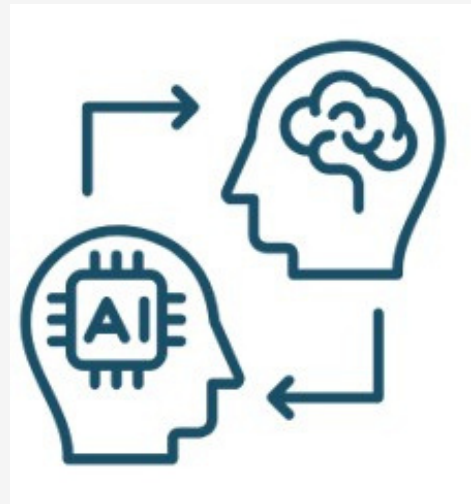
Mentors are not expected to solve the challenge for teams — their role is to encourage exploration, perspective, and critical thinking.

Why Mentorship Matters

Students often bring diverse perspectives but limited real-world experience. Mentors help teams:

- connect ideas to industry realities
- think through practical implications of technology
- consider ethical and societal impacts
- refine their approach to problem solving

Mentorship strengthens the collaborative learning environment that defines Human Edge.



What Mentors Do



Team Guidance

Engage with student teams during work sessions, helping them explore ideas and approach challenges thoughtfully.



Real-World Perspective

Offer feedback and practical insight to help teams connect their ideas to real-world applications.



Refinement & Problem Solving

Encourage interdisciplinary thinking and help teams refine their approach and presentations.

Who Should Participate

Mentors may include:

- industry professionals
- technologists and data leaders
- civic and policy leaders
- entrepreneurs and innovators
- faculty and research leaders

A range of perspectives strengthens the experience.

Time Commitment

Typically 2–4 hours during the event.

Learn More

Interested in supporting interdisciplinary learning and responsible AI innovation? We welcome mentors from across academia, industry, and civic leadership.