

HUMAN EDGE

Judges

Human Edge: Where Liberal Arts Meets AI for Real-World Impact

Human Edge brings together students, educators, industry leaders, and civic partners to explore how artificial intelligence can be applied responsibly to real-world challenges.

Judges help recognize innovative and thoughtful approaches developed by interdisciplinary student teams.

The Role

Judges participate in the final presentation session of the Human Impact Studio, evaluating student teams as they present insights, prototypes, or strategic recommendations addressing real-world AI challenges.

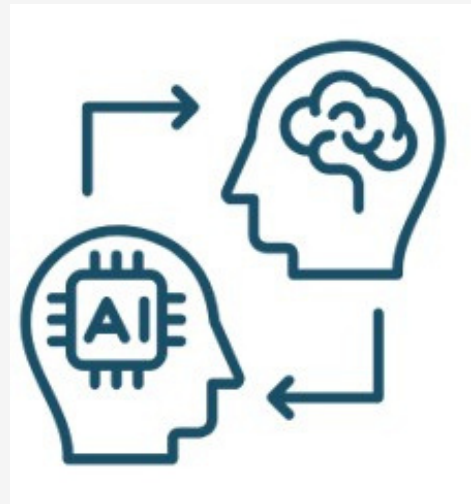
Judges help identify work that reflects strong thinking, collaboration, and responsible innovation.

Why Judging Matters

The Human Edge Studio encourages students to combine technical capability with ethical reflection and interdisciplinary thinking.

Judges play an important role in recognizing work that demonstrates:

- thoughtful problem solving
- responsible use of AI and data
- strong communication and collaboration
- practical real-world application



How Faculty Contribute



Evaluate Presentations

Review team presentations and assess ideas using a structured judging rubric.



Offer Perspective

Provide brief feedback and insight based on academic, industry, or civic experience.



Recognize Innovation

Help identify teams whose work demonstrates creativity, responsible thinking, and interdisciplinary collaboration.

Who Should Participate

Judges may include:

- faculty and academic leaders
- industry professionals and technologists
- civic and policy leaders
- entrepreneurs and innovators

A range of perspectives strengthens the evaluation process.

Time Commitment

Approximately 2–3 hours during the final presentation session..

Learn More

Judges help highlight innovative thinking and responsible approaches to AI challenges. We welcome perspectives from academia, industry, and civic leadership.